

Pollinator Week

Ponca State Park

June 23-25, 2017



Friday, June 23

9:00 am – 11:00 am Introduction to Archery — Introductory courses on Archery are being offered in the Eric Wiebe Shooting Complex. All equipment is provided. Archery participants must be 5 years old or older. **Meet and pay at the Eric Wiebe Shooting Complex. Cost \$1/6 arrows for archery.**



1:00 pm Drawing Nature — Participants will observe wildflowers, trees, and wildlife, then draw what they see. Discover the link between nature and art. **Meet at the East Shelter House. Please pre-register and pay at the front desk of the Resource and Education Center. Maximum of 20 participants. Cost is \$1 per drawing.**

3:00 pm A Square in the Woods — We'll hike out into the woods and pick a spot in which we will mark with yarn. Record all of the things you find within your square. We will then compare notes and see what interesting things you discover. **Meet at the West Shelter House. Free.**

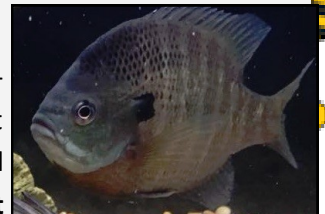
10:00 pm– 1:00 am Star Gazing and Photography— Enjoy a starry night viewing constellations, galaxies, and planets. Learn how to photograph the night sky. Telescopes and binoculars will be provided. Participants are encouraged to bring a camera. **Meet at the Ponca State Park water tower across from the Turkey Ridge Campground. Free.**

Saturday, June 24

9:00 am – 11:00 am Introduction to Archery and Shotguns — Introductory courses on archery and shotguns will be offered at the Eric Wiebe Shooting Complex. All equipment will be provided. Archery participants must be 5 years old or older and shotgun participants must be 12 years old or older. **Meet and pay at the Eric Wiebe Shooting Complex. Cost is \$1/6 arrows for archery; \$7/box of shells for shotguns.**

11:30 am Critter Corner — Critter Corner is a very popular program for all ages. It provides a snapshot of wildlife found along the Missouri River. Participants will be able to see and touch live critters, furs, feathers, shells, skulls, etc. **Meet at the Resource & Education Center. Free.**

1:00 pm Make a Water-scope — Ever wonder what critters are lurking beneath the surface of the water in a pond or stream? Participate in this program to learn a little about aquatic critters and how to make your own water-scope for peering into another world underwater. **Meet at the Resource and Education Center. Please pre-register and pay at the front desk. Maximum of 20 participants. Cost is \$1/craft.**



3:00 pm Fish of the Missouri — Learn about the different types of fish found in the Missouri River. Depending on the availability of fish and weather, we will be seining (netting) for fish and viewing our catch. Be prepared to get wet. Older shoes or water shoes are recommended. **Meet at the Riverfront Campground. Free.**

Sunday, June 25

9:00 am – 11:00 am Tomahawk and Atlatl — Introductory Course on tomahawks and atlatl will be offered at the Eric Wiebe Shooting Complex. All equipment will be provided. Participants must be 8 years or older. **Meet at the Eric Wiebe Shooting Complex. Cost is \$1/6 throws.**

1:00 pm Fossils — Many fossils have been found at Ponca State Park including two plesiosaurs, an ancient giant fish (Gilllicus), sharks teeth, and much more. Participants will be on the hunt for fossils. **Meet at the boat ramp near the Riverfront Campground. Free.**

Visit our Facebook Page, [Nebraska Northeast Parks](#), to view our upcoming events at Ponca State Park. All programs subject to change due to staffing/weather. For questions please call at [\(402\)-755-2284](tel:402-755-2284).